

ADVANCED PHYSICIAN TRAINING



Royal Australasian College of Physicians

racp.edu.au/trainees/advanced-training/advanced-training-programs

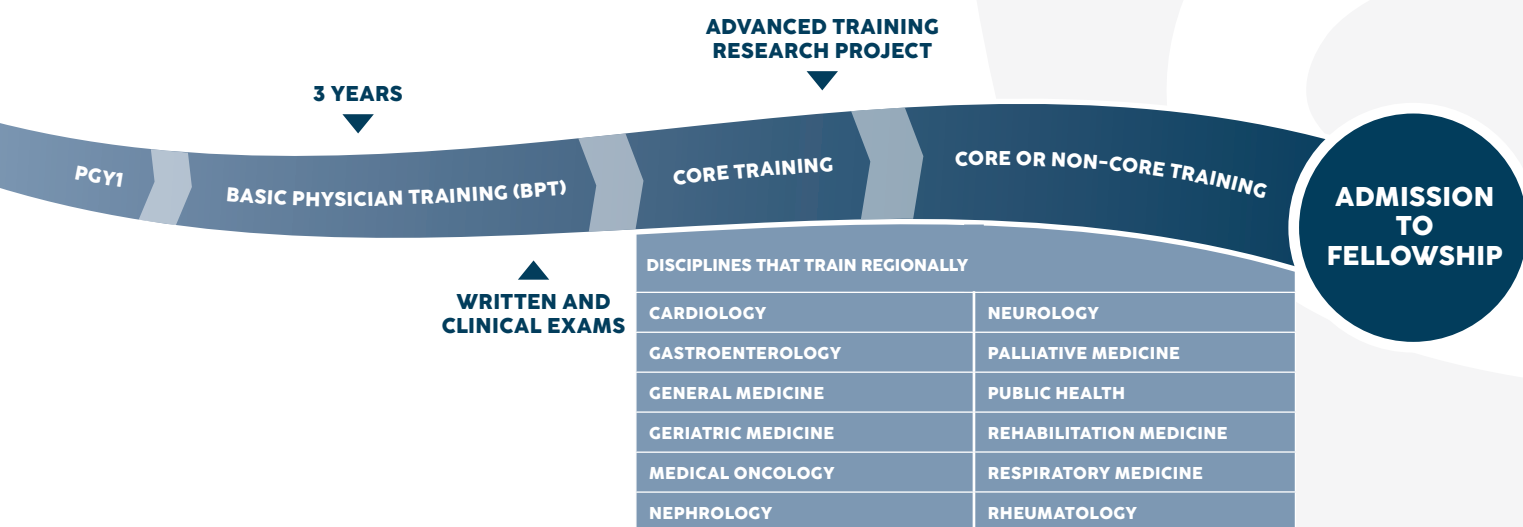
ENTRY REQUIREMENTS

MEDICAL REGISTRATION	CLINICAL EXPERIENCE	OTHER
General Medical Registration	Must have completed 3 years Basic Physician Training (BPT) including passing Written and Clinical Exams	Must be appointed to an appropriate Advanced Training Position

TRAINING PATHWAY

CLINICAL TRAINING	OTHER REQUIREMENTS	ASSESSMENT	EXAMS	ADDITIONAL INFO
36 months of RACP certified training except Rehabilitation medicine which is 48 months	Australian Aboriginal, Torres Strait Islander and Māori Cultural Competence and Cultural Safety online course	All assessment details can be found on the Advanced Physician Training pages of the RACP website	Some programs include entry, progression, or exit assessments	Most disciplines strongly encourage training at more than one training site Most require at least 24 months training in Australia or Aotearoa New Zealand RPL may apply Flexible training available

MINIMUM DURATION (6 YEARS FROM PGY2+)



FEES 2024 (\$AUD)

APPLICATION/ SELECTION	TRAINEE REGISTRATION	ANNUAL TRAINING	EXAMS/ ASSESSMENTS	OTHER
N/A	N/A	\$3911.00	Prior to Advanced Training: Written Exam \$2153 BPT Clinical Exam \$3221	Other fees may apply

Disciplines that train regionally



Discipline Link	Clinical Training	Other considerations
Cardiology	36 months Core Training	<ul style="list-style-type: none"> Additional training opportunities are available
Gastroenterology	36 months of certified training: <ul style="list-style-type: none"> 24 months Core Training (min) 12 months Non-Core Training (max) 	<ul style="list-style-type: none"> Non-core training cannot occur before core training except where trainees are undertaking dual training or a higher degree during their non-core training. Core includes 12 months minimum on-call/out of-hours experience every fourth weekend. Non-Core training could be Research
General & Acute Care Medicine	36 months of certified training: <ul style="list-style-type: none"> 24 months Core Training (min) 12 months Non-Core Training (max) 	<ul style="list-style-type: none"> The order of Core and Non-Core training is flexible. Internal Medicine Society of Australia and New Zealand (IMSANZ) conference (recommended).
Geriatric Medicine	36 months of certified training: <ul style="list-style-type: none"> 24 months Core Training (minimum) 12 months Non-Core Training (maximum) 	<ul style="list-style-type: none"> The order of Core and Non-Core training is flexible. At least 1 year of core training to be completed in Australia or Aotearoa New Zealand. The requirement to train in more than 1 hospital/health setting can cause personal inconvenience, particularly when training in rural locations. The ATC/ATS will seriously consider the impact when assessing requests to vary the requirement.
Medical Oncology	36 months of certified training: <ul style="list-style-type: none"> 24 months Core Training (min) 12 months Non-Core Training (max) 	<ul style="list-style-type: none"> The order of Core and Non-Core training is flexible. You must train at a minimum of 2 settings over the course of your Advanced Training. A maximum of 24 months is allowed at a single setting. Non-Core training can be undertaken in research, laboratory-based training, overseas training relevant and specific to cancer medicine or an additional year of clinical training (medical oncology, cancer genetics, palliative medicine, radiation oncology or malignant haematology) 1 x half-day Communication Skills Workshop over the course of your Advanced Training
Nephrology	36 months Core Training	<ul style="list-style-type: none"> You cannot exceed 24 months at a training site
Neurology	36 months of certified training: <ul style="list-style-type: none"> 24 months Core Training (min) 12 months Non-Core Training (max) 	<ul style="list-style-type: none"> It is expected that your non-core training follows on from your core training Courses and workshops: <ul style="list-style-type: none"> ANZAN/ESA EEG Workshop Electromyography (EMG) Workshop (Adult Medicine trainees only) Postgraduate ANZAN/BMRI Neuropathology and Neuroimaging Course (Adult Medicine trainees only)
Palliative Medicine	36 months of certified training Adult Medicine Trainees: <ul style="list-style-type: none"> 24 months Core Training (4 specified 6-month terms) 12 months Non-Core Training (2 x 6-month terms) 	Two pathways to enter Advanced Training in Palliative Medicine: <ol style="list-style-type: none"> After completing basic training: can do the Adult Medicine or Paediatrics & Child Health If you are already a fellow from another prescribed medical college: Can do Adult Medicine stream.
Rehabilitation Medicine	48 months of relevant professional experience in approved rotations	<ul style="list-style-type: none"> Trainees are strongly encouraged to gain experience in more than one hospital unit or training setting Must have completed 24 months postgraduate supervised training in general medical and surgical areas within the last 5 years. A minimum of 2 training settings 36 months minimum Core Training in Australia and/or Aotearoa New Zealand, with the exception of trainees based in Hong Kong and Singapore.
Public Health Medicine	36 months across one or more approved training positions	<ul style="list-style-type: none"> Completed Master of Public Health degree (or equivalent) that satisfies AFPHM five core discipline areas (Epidemiology, Biostatistics, Health Protection, Health Promotion and Health Policy/Planning/Management)
Respiratory Medicine	36 months of certified training: <ul style="list-style-type: none"> 24 months Core Training (min) 12 months Non-Core Training (max) 	<ul style="list-style-type: none"> The order of Core and Non-Core training is flexible Trainees are strongly encouraged to complete their training at more than one training site
Rheumatology	36 months of certified training: <ul style="list-style-type: none"> 24 months Core Training (min) 12 months Non-Core Training (max) 	<ul style="list-style-type: none"> It is expected that your Core training precedes your Non-Core training.